

COMMUNITY NOTICE

Rivett School Site: A Community Driven Proposal

CLEAR is a Rivett community group advocating the needs of our suburb
For info: www.clear.org.au or email us: clear@live.com.au

Community feedback has made it possible for CLEAR to develop the following conceptual masterplan for our suburb.

PLEASE TURN OVER TO SEE THE PROPOSAL

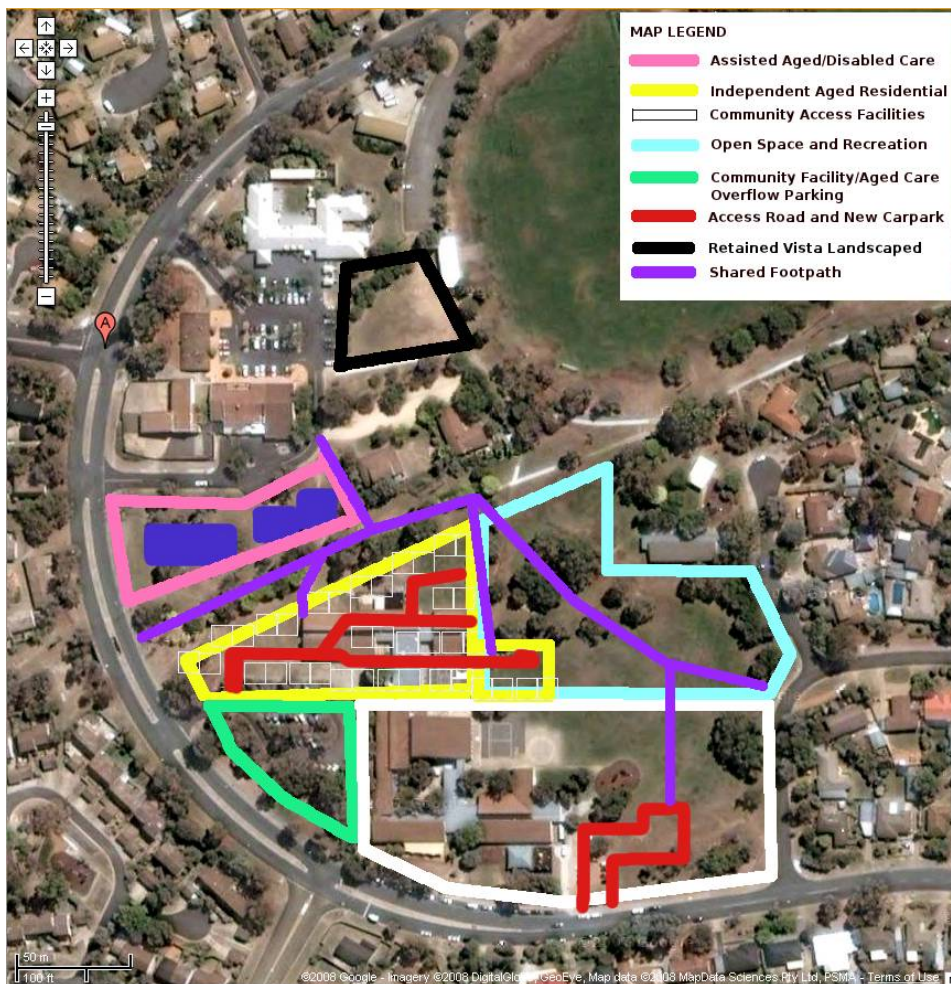
- To **ensure** development continues to provide **adequate services for you!**
- We are a diverse community needing **childcare, healthcare & future flexibility**
- The **2006 Census**¹ tells us that:
 - Since 2001, the **age profile** of our suburb is **stable in the 0-4 age group**
 - The **0-11 age group** has **418 children**
 - The **65 and over** group has **311 people**
 - The three **most common ages** are: **33** (81 people), **34** (70 people) and **35** (60 people) and the community must have facilities for these people and their young families

CLEAR encourages you to express your view, whatever it may be.

GOVERNMENT CONSULTATION CLOSES: 31 July 2008

- Make your voice heard by **31 July 2008**:
 - <http://www.bangthetable.com.au/communitiesites>
 - Email: ListenACT@ghd.com.au
 - Call 02 6256 1222
 - Post PO Box 36, Belconnen ACT 2616
- If you **support the CLEAR concept plan** put this in your **GHD comments**
- You are encouraged to **send CLEAR a copy of your comments** in addition to sending them to GHD

¹ Australian Bureau of Statistics Cat. No. 2068.0 - 2006 Census Tables



Possible Rivett Shopping and School Site Precinct Supporting:

- A **flexible facility of mixed use, publicly owned and accessible**
- Approximately **40 independent living units** (yellow area) with off-street vehicle parking accommodating 40 to 80 people, that is not fenced off from the community
- **Assisted care** (pink area) providing **24x7** activity near the shops and underpass, discouraging antisocial behaviour in that area. Servicing up to 80 high need residents
- **Safe, easy access for aged, disabled and young** to community facilities and shops
- Outdoor recreation space and open areas (light blue area)
- **A wellness, arts and learning precinct** for Rivett, with:
 - Community Facilities (white area) – **Childcare**, medical/dental centre, **indoor recreation** in existing hall **to give young and young at heart an activity centre**
 - A **walkable trip** for children, aged and disabled **to activity centre**
 - Provision for a **future small school** as demographic change occurs
 - Shared residential visitor overflow & community facility parking (green area)
 - **Positive, active aging AND growing up!**
- Access for all residents. We **do not support a repeat of the Fisher Primary School sale**. That hall became private, only accessible to retirement complex residents

Find more info at www.clear.org.au Email: clear@hotmail.com.au